

Split Stainless Steel- Shaft collars

with extension-tapped holes

SPECIFICATION

Types

- Type **A**: Extension-tapped holes, radial
- Type **B**: Extension-tapped holes, axial

Stainless Steel **NI**
Sintered Steel AISI 316 LHC
Socket head cap screw DIN 912
Stainless Steel AISI 304

INFORMATION

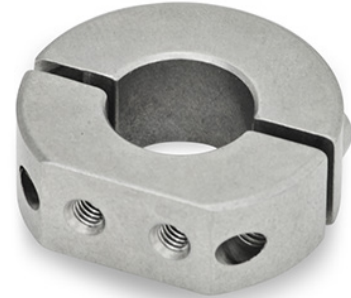
With extension-tapped holes of the split Stainless Steel-Shaft collars GN 7072.1, sensor holders GN 7062.10 (see page) or other elements such as the gear lever or cam can be attached to shafts and axles.

They can be assembled safely and easily with a high clamping force by reducing the slot height, without damaging the surface of shafts and axles. As compared to semi-split shaft collars, split shaft collars can even be assembled radially.

The thread d_3 for sizes $d_1 = 30$ to 36 is designed as a through hole; for sizes $d_1 = 42$ and larger, it is designed as blind hole.

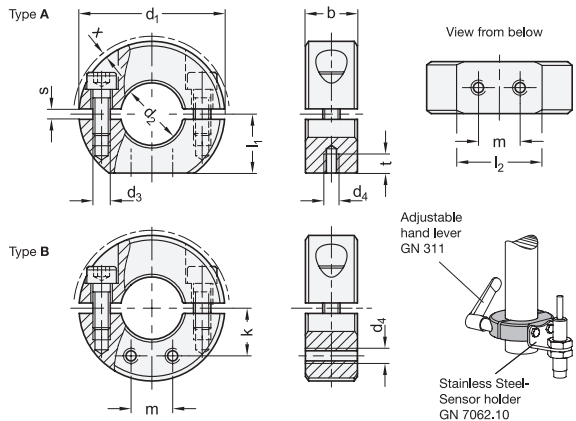
TECHNICAL INFORMATION

- ISO-Fundamental tolerances (see page A21)
- Stainless Steel characteristics (see page A26)



ACCESSORY

- Adjustable hand levers GN 311 (see page)
- Sensor holder GN 7062.10 (see page)
- Damping washer GN 7072.30 (see page)



* Complete with type index of the Split Stainless Steel-Set collars

- A** Extension-tapped holes, radial **B** Extension-tapped holes, axial

GN 7072.1

STAINLESS STEEL

Description	d_1	d_2 H10 Recommended shaft tolerance h11	b ± 0.2	d_3	d_4	l_1	l_2	m	s	t	$x \approx$ Max. protrusion of cap screw	Adjustable hand lever for d_3	
GN 7072.1-30-B12-NI-*	30	B 12	11	M 4	M 3	13	15	8	2.1	4	0.7	311-30-M4-12-SW	36
GN 7072.1-32-B14-NI-*	32	B 14	11	M 4	M 3	14	15.5	8	2.1	4	0.7	311-30-M4-12-SW	39
GN 7072.1-36-B15-NI-*	36	B 15	13	M 5	M 4	15	19.9	10	2.1	5.5	1.4	311-30-M5-13-SW	65
GN 7072.1-36-B16-NI-*	36	B 16	13	M 5	M 4	15	19.9	10	2.1	5.5	1.4	311-30-M5-13-SW	58
GN 7072.1-42-B18-NI-*	42	B 18	15	M 5	M 4	17	24.7	12	3	5.5	0.6	311-30-M5-15-SW	92
GN 7072.1-42-B20-NI-*	42	B 20	15	M 5	M 4	17	24.7	12	3	5.5	0.6	311-30-M5-15-SW	86
GN 7072.1-48-B22-NI-*	48	B 22	15	M 5	M 4	20	26.5	12	3	5.5	0	311-45-M5-16-SW	119
GN 7072.1-48-B25-NI-*	48	B 25	15	M 5	M 4	20	26.5	12	3	5.5	0	311-45-M5-16-SW	108
GN 7072.1-55-B28-NI-*	55	B 28	15	M 6	M 5	22.5	31.6	18	3	7	0.5	311-45-M6-18-SW	147
GN 7072.1-55-B30-NI-*	55	B 30	15	M 6	M 5	22.5	31.6	18	3	7	0.5	311-45-M6-18-SW	137
GN 7072.1-60-B32-NI-*	60	B 32	15	M 6	M 5	25	33.2	18	4	7	0.4	311-45-M6-19-SW	177
GN 7072.1-60-B35-NI-*	60	B 35	15	M 6	M 5	25	33.2	18	4	7	0.4	311-45-M6-19-SW	150
GN 7072.1-65-B40-NI-*	65	B 40	15	M 6	M 5	27.5	34.6	18	4	7	0.5	311-45-M6-20-SW	169

Weight type A

